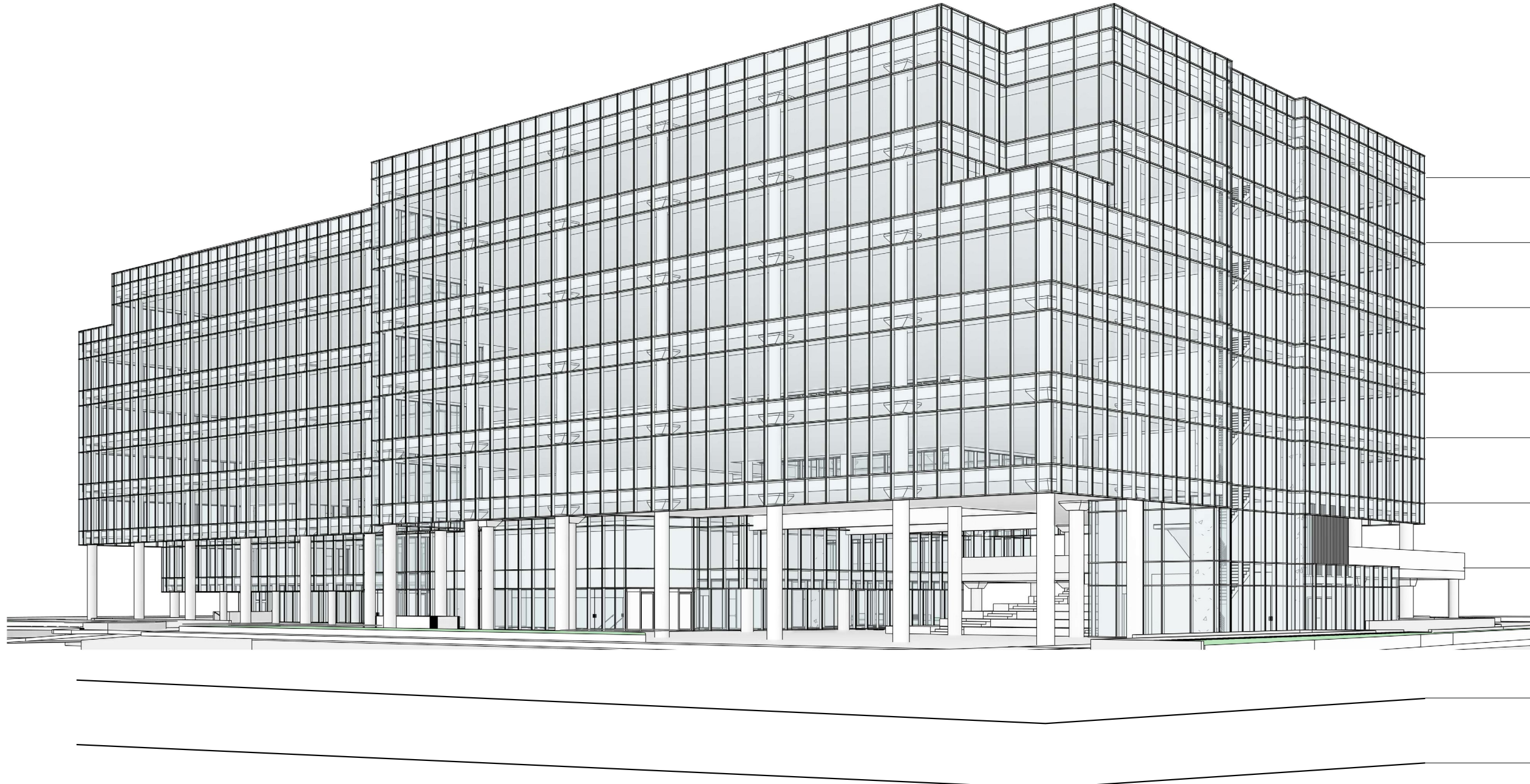


Floor plans

SKYLIGHT
MADRID



Schedule of areas



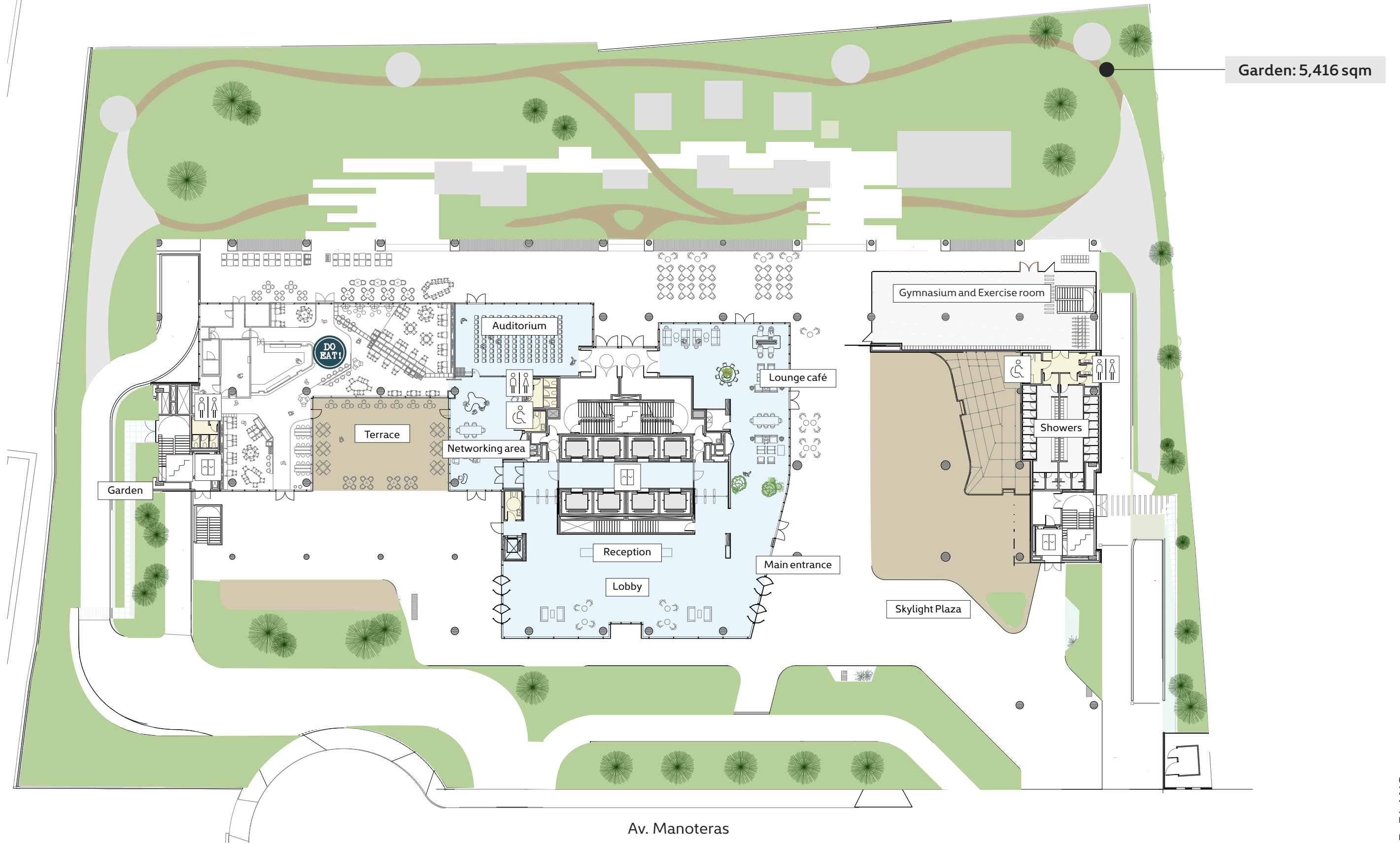
	LETTABLE AREA	PRIVATE TERRACES AND GARDENS
Roof Terrace	-	1,111 sqm
6 th Floor	4,667 sqm	174 sqm
5 th Floor	4,933 sqm	28 sqm
4 th Floor	4,978 sqm	-
3 rd Floor	4,978 sqm	-
2 nd Floor	4,978 sqm	106 sqm
1 st Floor	2,571 sqm	521 sqm
Ground Floor	-	5,416 sqm
Basement -1	200 car parking spaces	
Basement -2	189 car parking spaces	
TOTAL	27,104 sqm	7,356 sqm



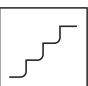
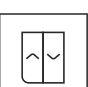
27,104 sqm
Total lettable area

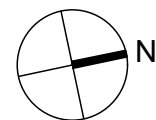
Over **10,000 sqm** of outdoor space including
7,356 sqm of private terraces and gardens

389 car parking spaces
100 electric vehicle parking spaces
(10 installed and 90 pre-installed)

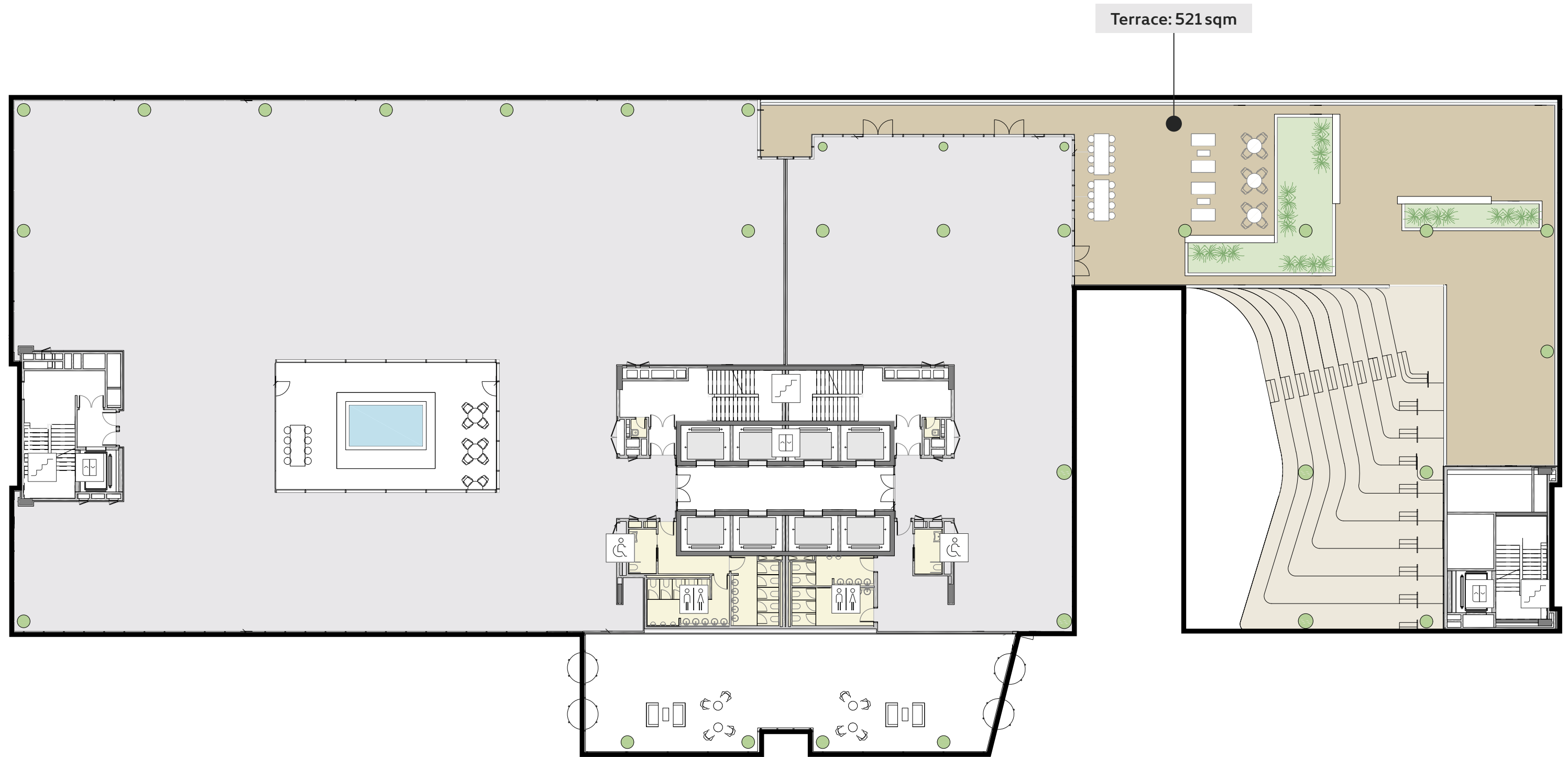
Ground floor



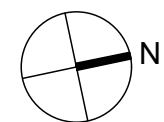
-  Accessible WC
-  WC
-  Stairs
-  Lifts



1st Floor
2,571 sqm



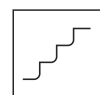
Terrace: 521 sqm



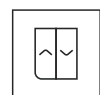
Accessible WC



WC



Stairs

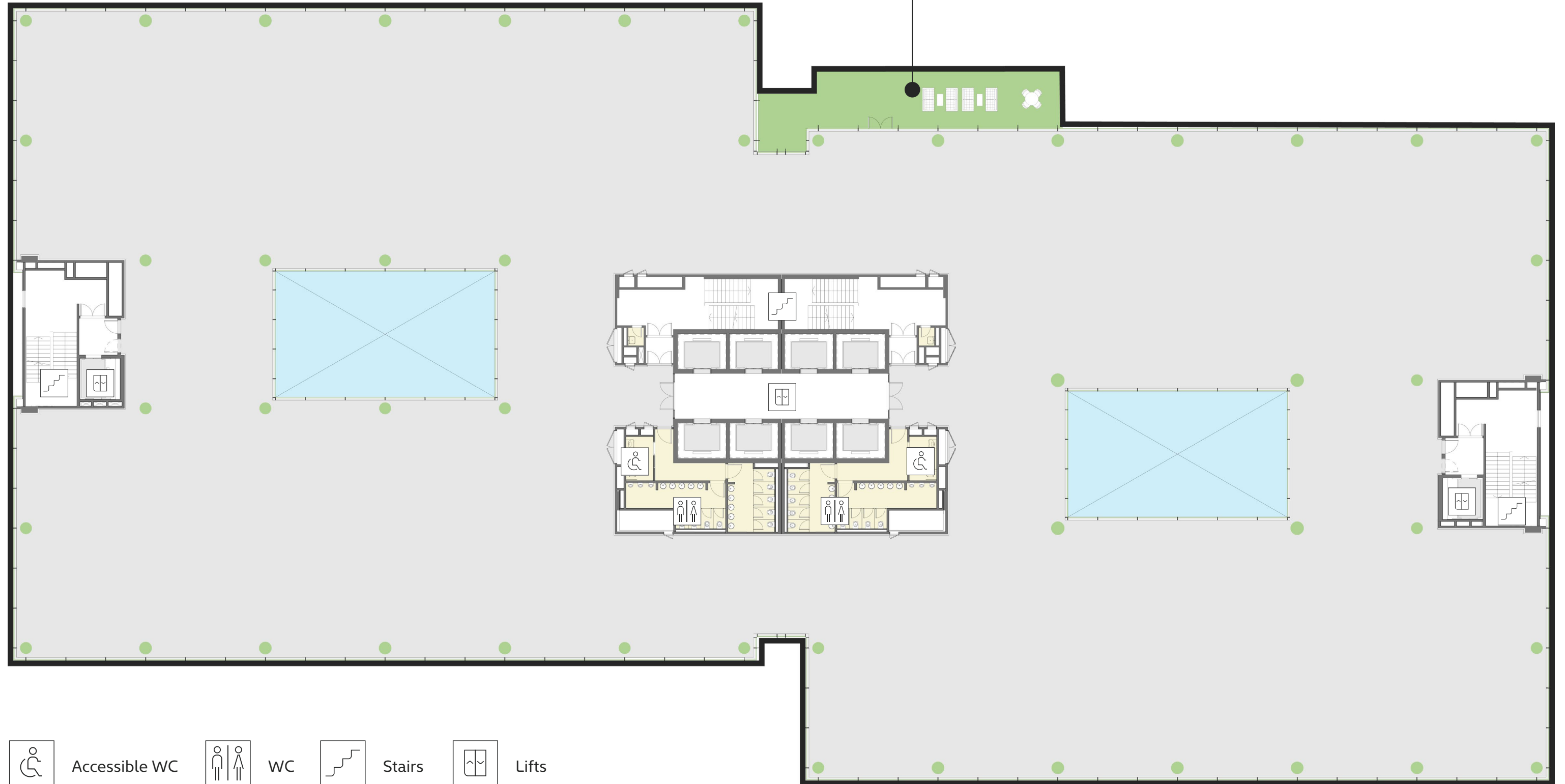


Lifts

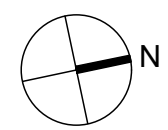
2nd Floor

4,978 sqm

Terrace: 106 sqm



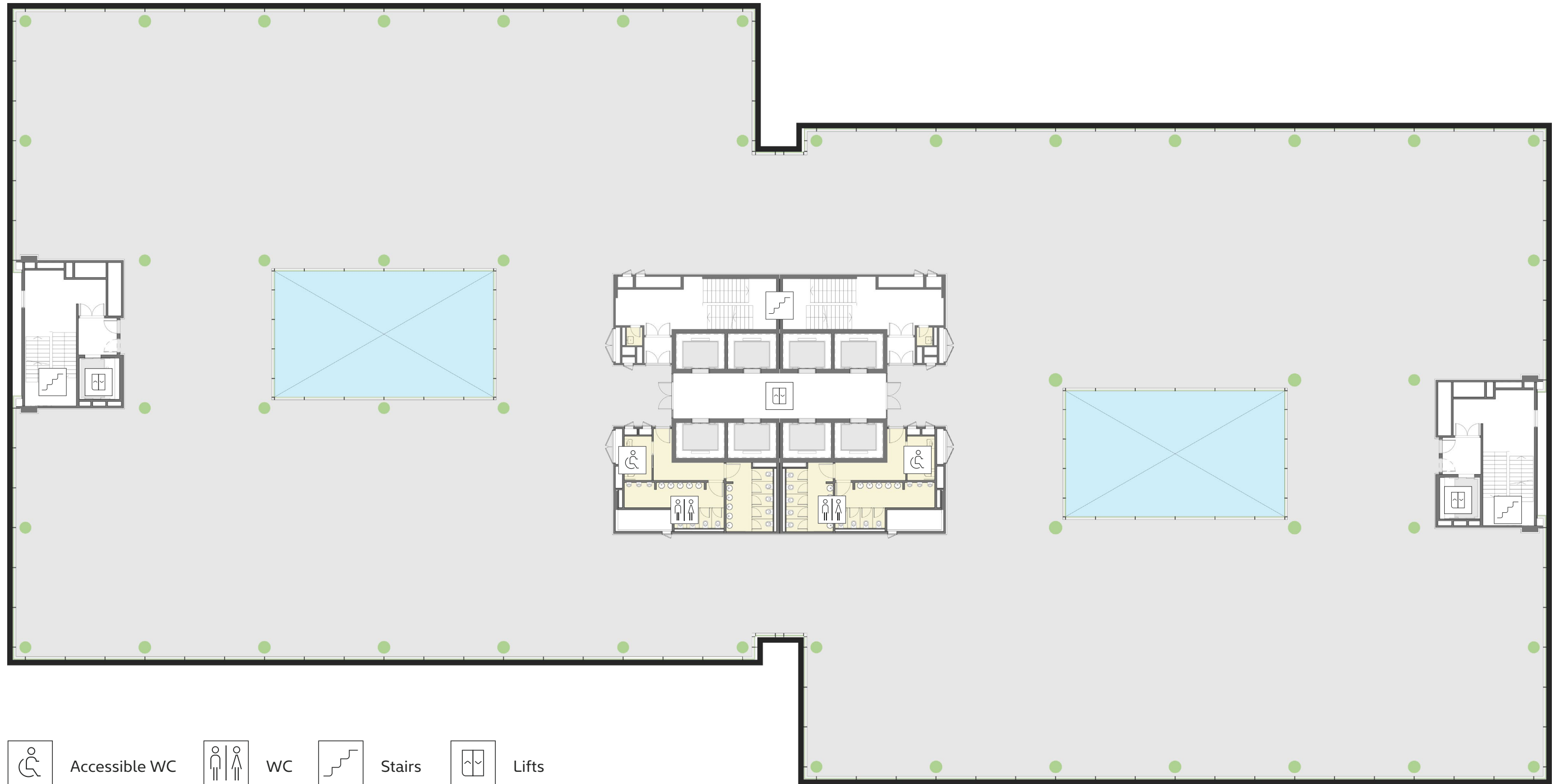
FLOOR PLANS



-  Accessible WC
-  WC
-  Stairs
-  Lifts

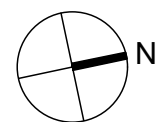
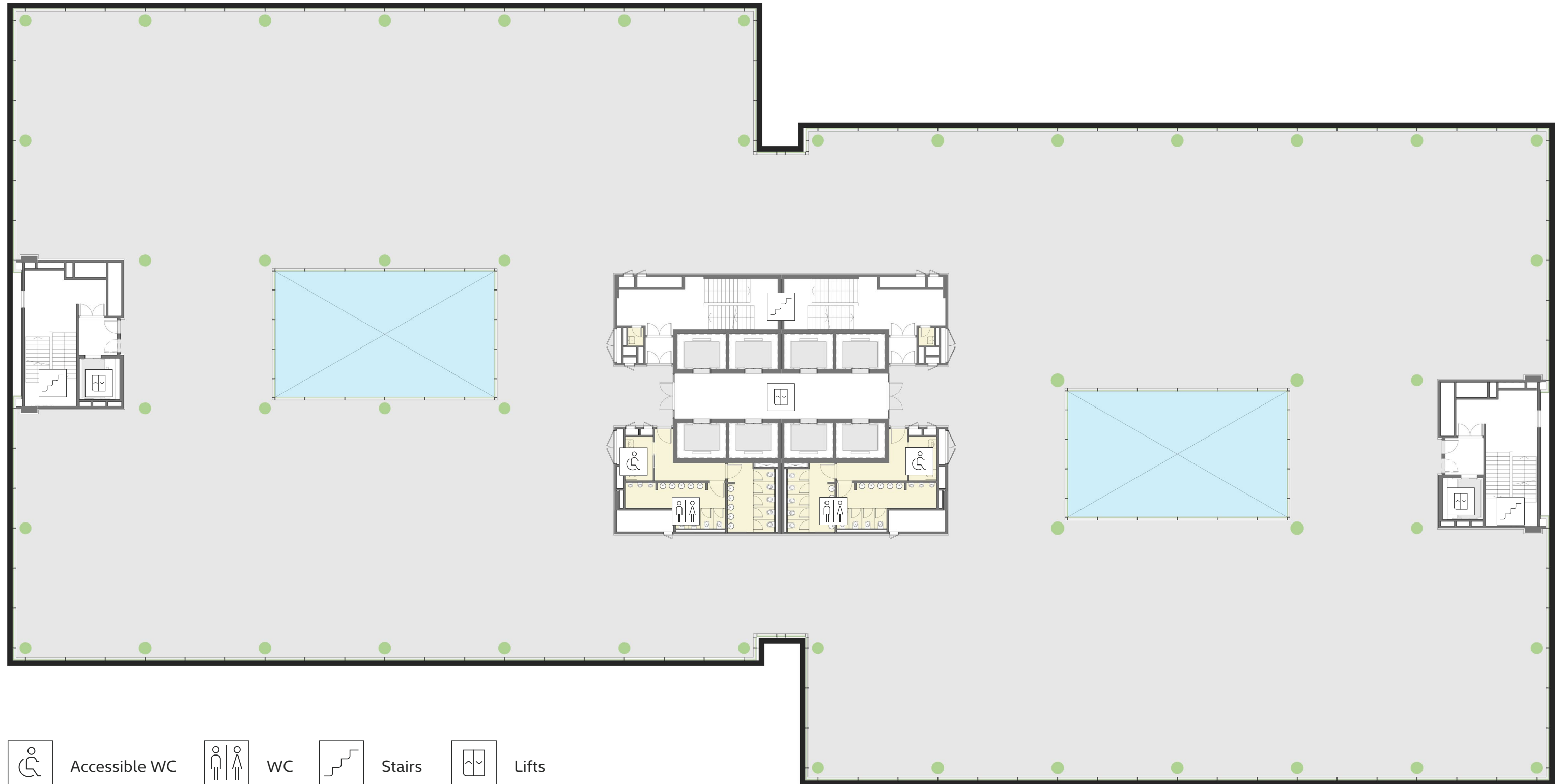
3rd Floor

4,978 sqm



4th Floor

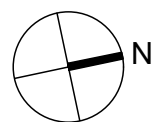
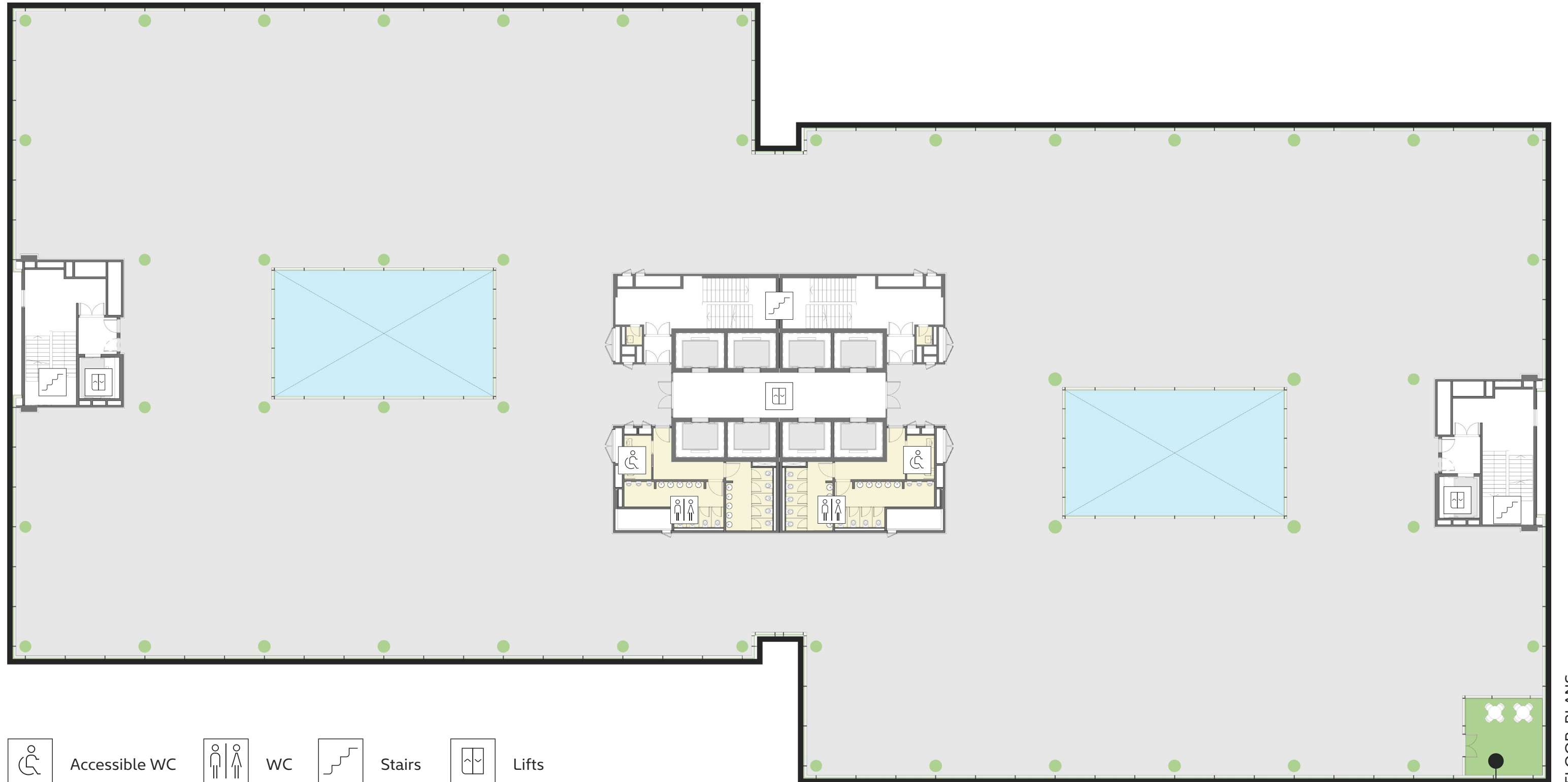
4,978 sqm



-  Accessible WC
-  WC
-  Stairs
-  Lifts

5th Floor

4,933 sqm



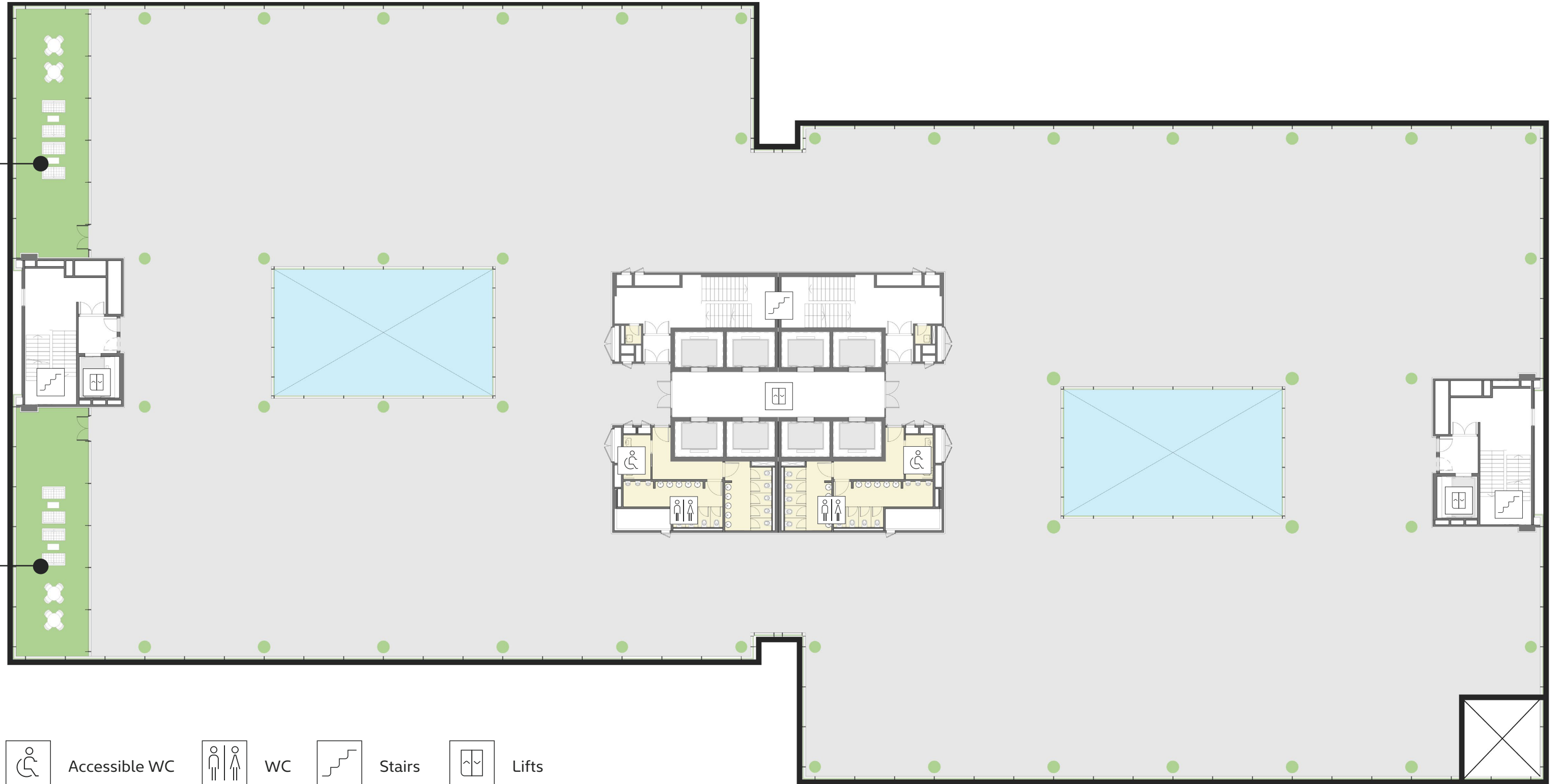
-  Accessible WC
-  WC
-  Stairs
-  Lifts

Terrace: 28 sqm

6th Floor

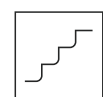
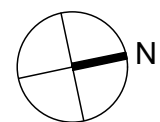
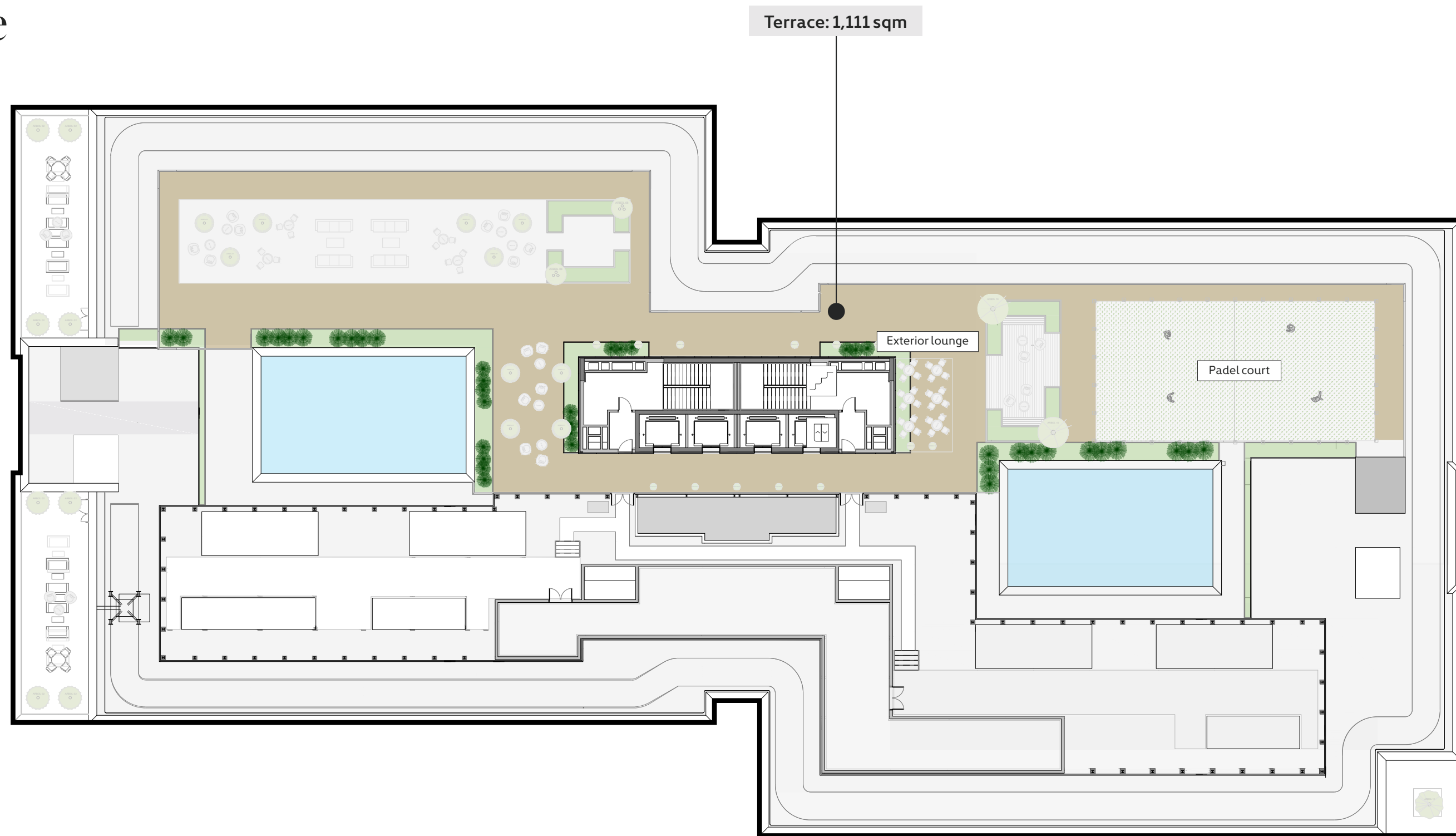
4,667 sqm

Terrace: 174 sqm



FLOOR PLANS

Roof terrace



Stairs



Lifts

skylightmadrid.com